

Exhibit A

Legal Description

Riverbank Main Parcel:

All that real property located in Lots 2,3 and 4 of Section 31, Township 2 South, Range 10 East, Mount Diablo Baseline & Meridian in the County of Stanislaus, State of California described as follows:

A portion of that real property transferred by Quitclaim deed on the 29th day of October, 1948, Document No. 22667 from the Reconstruction Finance Corporation to the United States of America filed in the Office of the Recorder of Stanislaus County described as follows:

Commencing at a 2" Iron Pipe and Cap in a Monument Well marking the Southwest corner of Section 31, said corner also being Southwest Corner of Township 2 South, Range 10 East of the Mount Diablo Baseline and Meridian; thence N 00°30'19" W, a distance of 477.15 feet along the West line of said Section 31 to the **Point of Beginning**:

Thence from said **Point of Beginning**, continuing N 00°30'19" W, a distance of 1748.73 feet along said west line of Section 31; thence S 89°38'30" E a distance of 30.00 feet to the Easterly Right of Way of Claus Road; thence continuing on the same line S 89°38'30"E a distance of 200.06 feet; thence S 85°42'25"E a distance of 48.89 feet; thence along the arc of a curve turning to the right, having a chord bearing of S 80°58'10" E, a chord length of 104.82 feet, and a radius of 500.00 feet; thence N 34°34'14"E, a distance of 1180.98 feet; thence N 00°31'18" E, a distance of 158.90 feet; thence S 89°22'53"E, a distance of 366.67 feet; thence continuing on the same line S 89°22'53"E, a distance of 10.00 feet to the Easterly line of Lot 2 of said Section; thence S 00°30'33"E, a distance of 2961.32 feet along the Easterly lines of said Lots 2,3 and 4; thence S 89°27'10"W, a distance of 620.09 feet; thence along the arc of a curve turning to the right, having a chord bearing of S 83°04'47"W, a chord length of 110.37 feet, and a radius of 500.00 feet; thence S 89°27'16"W, a distance of 153.41 feet; thence along the arc of a curve turning to the right, having a chord bearing of N 85°42'07"W, a chord length of 190.88 feet, and a radius of 500.00 feet; thence N 18°52'46" E a distance of 20.47 feet; thence N 57°42'01"W a distance of 177.77 feet; thence S 89°40'01" W, a distance of 194.34 feet to the Easterly Right of Way line of Claus Road; thence S 89°40'01" W, a distance of 30.00 feet to the West line of said Section 31 and the **Point of Beginning**.

Subject to all rights of way and easements, record or non record.

Having a Gross Area of and 77.678 acres, more or less and a Net Area of 76.475 acres, more or less.

The basis of bearings for this legal description is the California State Plane Coordinate System Zone III (NAD 83) and is based on GPS observations from NGS Monuments Garcia and Claribel in August, 2012

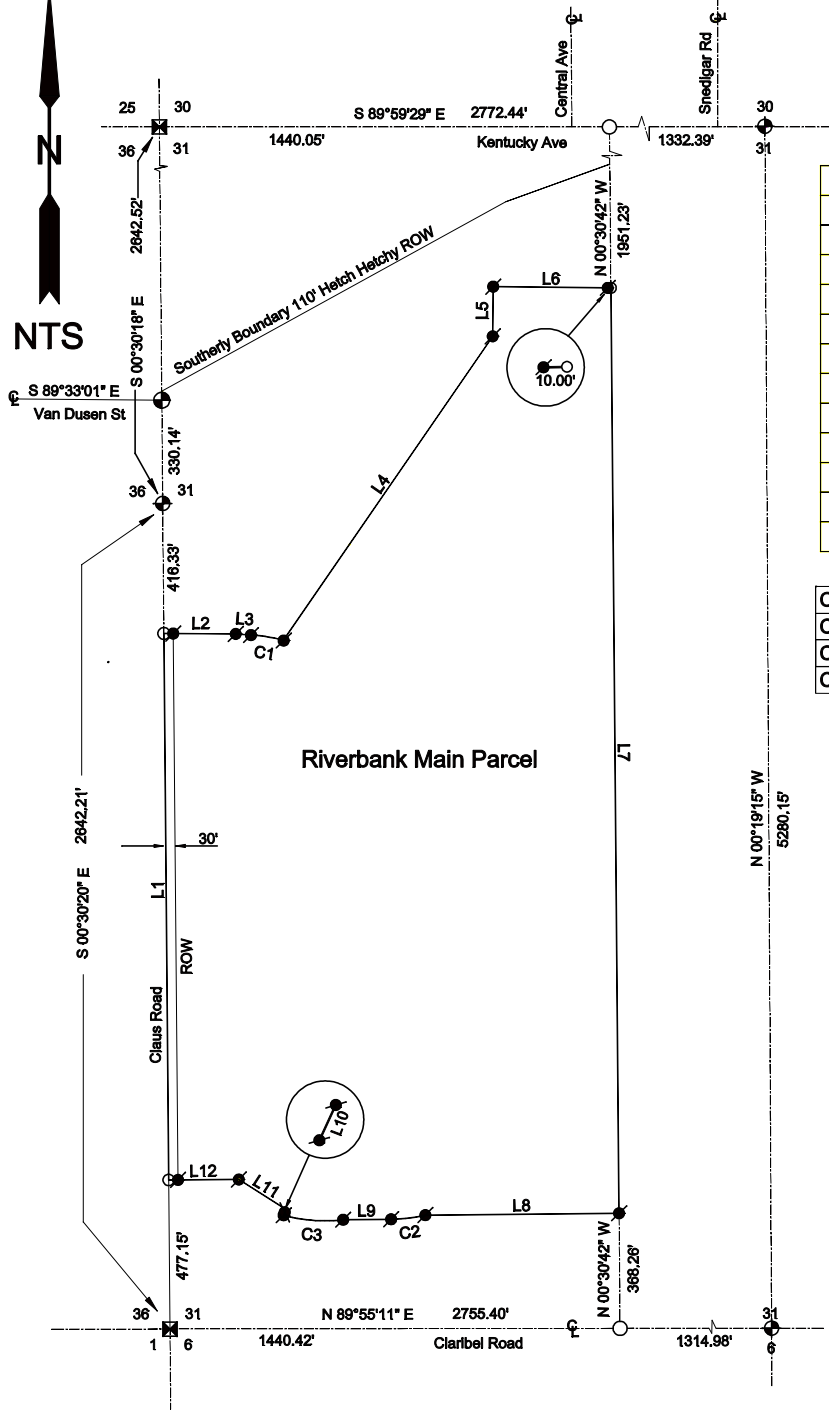
Kevin D. Burgess Ca. LS 6718



Date: August 31, 2012



Revised 4/0//2013



LINE	BEARING	DISTANCE
L1	N 00°30'19" W	1748.73'
L2	S 89°38'30" E	230.06'
L3	S 85°42'25" E	48.89'
L4	N 34°34'14" E	1180.98'
L5	N 00°31'18" E	158.90'
L6	S 89°22'53" E	376.67'
L7	S 00°30'33" E	2961.32'
L8	S 89°27'10" W	620.09'
L9	S 89°27'16" W	153.41'
L10	N 18°52'46" E	20.47'
L11	N 57°42'01" W	177.77'
L12	S 89°40'01" W	224.34'

CURVE	CHORD BEARING	CHORD LENGTH	RADIUS
C1	S 80°58'10" E	104.82'	500.00'
C2	S 83°04'47" W	110.37'	500.00'
C3	N 85°42'07" W	190.88'	500.00'

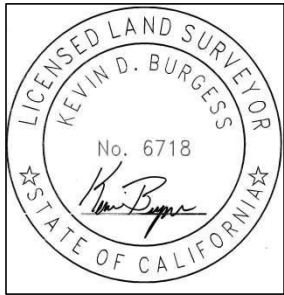
Riverbank Main Parcel

AREA

Gross Area = 77.878 Acres
 Net Area = 76.475 Acres

LEGEND

- ☒ Section Corner
- ◆ 1/4 Corner
- ⊙ Street Intersection Mon
- ⊙ Spike/USACE Washer
- Dimension Point



U.S. Army Corps of Engineers
Sacramento District
 1325 'J' Street, Sacramento, Ca. 95814

Exhibit B
Former Riverbank Ammunition Plant
Main Ammunition Plant Parcel

City of Riverbank
 County of Stanislaus
 State of California

Drawn: KDB Date: AUG/2011 Scale: NTS

Revised 3/25/2013 KDB
 Revised 4/7/2013 KDB